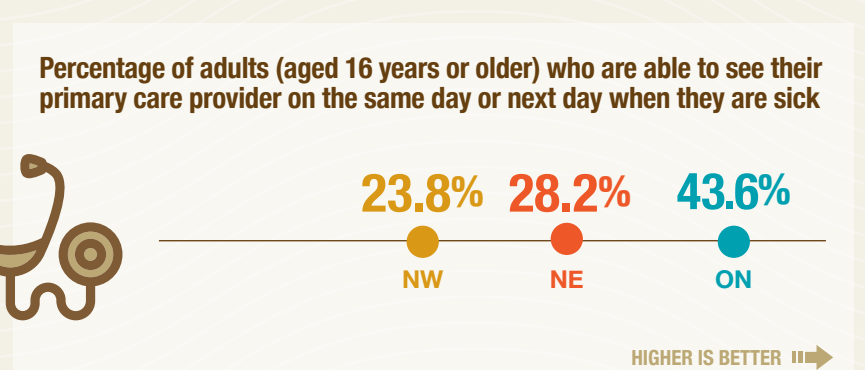
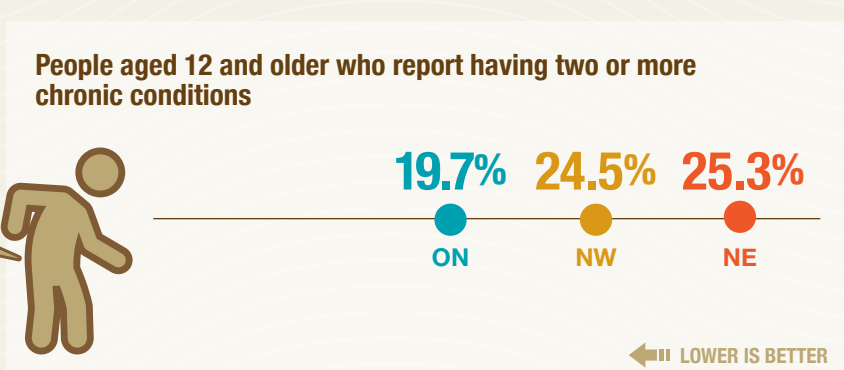
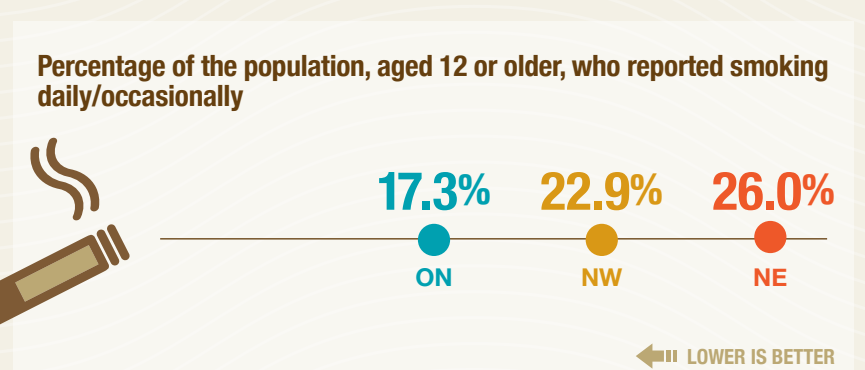
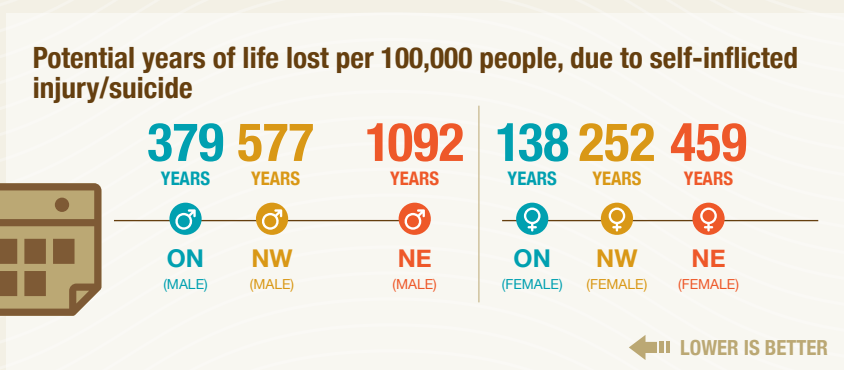
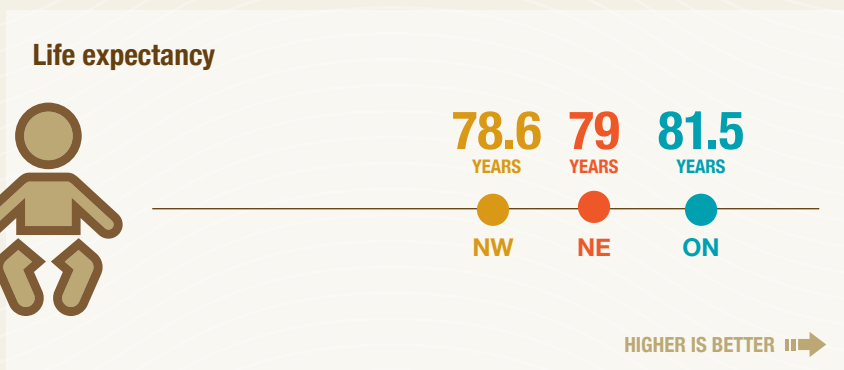
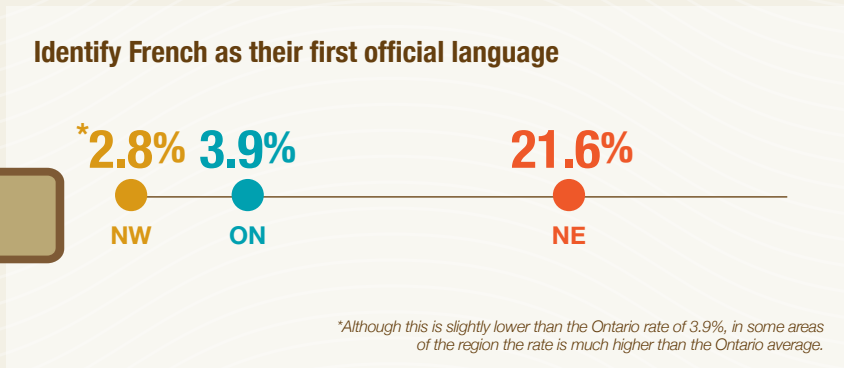
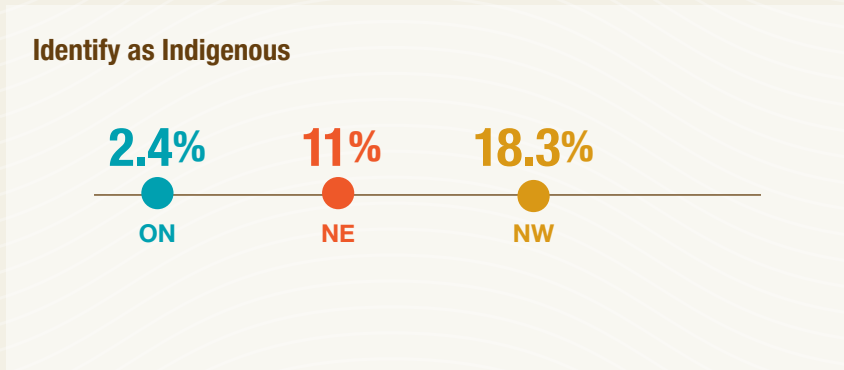
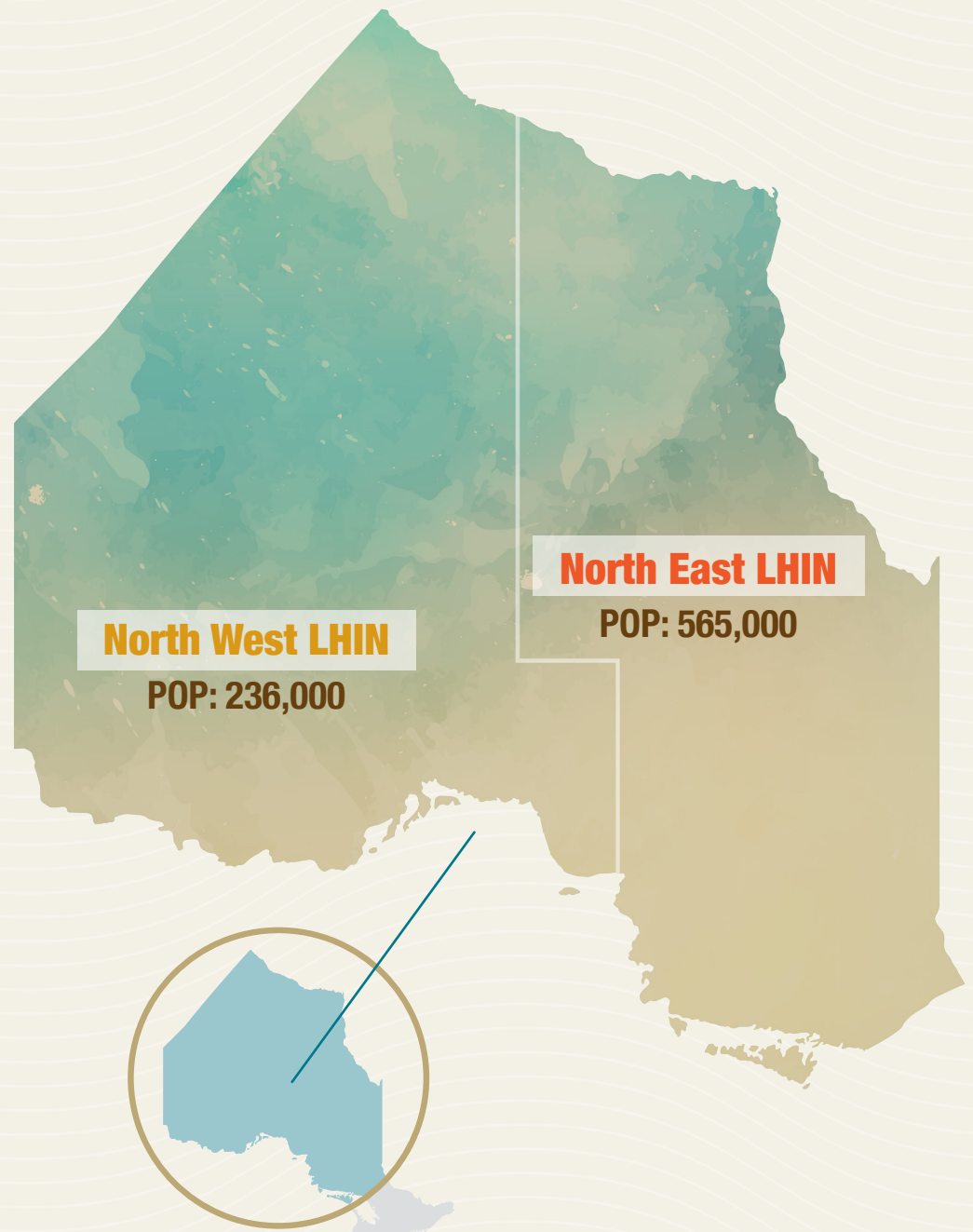


HEALTH IN THE NORTH:

A report on geography and the health of people in Ontario's two northern regions

The north refers to the northern part of Ontario, and for the purposes of this report, covers the North East and North West Local Health Integration Network regions. These two vast regions cover 80% of Ontario's landmass, an area larger than France and the UK combined.



For more details, please see the full report at hqontario.ca/HealthintheNorth
hqontario.ca